



USD 263 - Mulvane

628 E. Mulvane St.
Mulvane, KS 67110
Phone: 316-777-1102 • Fax 316-777-1103
bcanfield@usd263.org

Brad Canfield
Director of HR and
Operations

May 12, 2020

To Whom It May Concern:

The Mulvane Public School District USD 263, is requesting bids that meet or exceed the specifications listed in this asphalt repair of existing parking lots/drives at Munson Primary School, Mulvane Middle School, and Mulvane High School. Bids must be submitted no later than Tuesday, June 2 2020, at 2:30 p.m. Bids will be opened at 2:45 p.m. on the due date.

Questions regarding this bid request may be directed to USD 263 Director of HR and Operations, Brad Canfield at 316-777-1102.

Please list your bid specifications on a separate sheet and send to:

Brad Canfield

Director of Operations

USD 263 Mulvane

628 E. Mulvane St.

Mulvane, KS 67110

316-777-1102 (Phone)

316-777-1103 (Fax)

Please send bids through email, mail, or hand deliver. Thank you for your interest.

USD 263 Asphalt Repair Bid Request

The Mulvane School District is seeking bids for asphalt repair of existing parking lots/drives at Mulvane High School, Munson Primary School, and Mulvane Middle School. (see attached maps)

Mulvane Middle School Description (Phase III)

Asphalt Large Crack Repair (16" Wide) 03" 30.00 LF

Mill & Remove Asphalt From All Cracks That Are 1" Or Larger Or Have Base Failure. Milling Shall Be At Least 16" Wide, Wider As Necessary. Place & Compact New Hot Mix Asphalt Flush With Surrounding Pavement. Asphalt Mix To Be Used: BM-2 Surface Mix.

Asphalt Patching 03" 860.00 SF

Remove Damaged Area(s) Of Asphalt Down To Proper Depth. Haul Off Material. Place And Compact New Hot-mix Asphalt In The Area(s) Removed. Asphalt Mix To Be Used: BM-2 Surface Mix.

Munson Primary School Description (Phase II)

Asphalt Large Crack Repair (16" Wide) 03" 423.00 LF

Mill & Remove Asphalt From All Cracks That Are 1" Or Larger Or Have Base Failure. Milling Shall Be At Least 16" Wide, Wider As Necessary. Place & Compact New Hot Mix Asphalt Flush With Surrounding Pavement. Asphalt Mix To Be Used: BM-2 Surface Mix.

Asphalt Patching 03" 1,336.00 SF

Remove Damaged Area(s) Of Asphalt Down To Proper Depth. Haul Off Material. Place And Compact New Hot-mix Asphalt In The Area(s) Removed. Asphalt Mix To Be Used: BM-2 Surface Mix.

Concrete Approach - Replacement 08" 380.00 SF

Saw Cut, Jackhammer, & Remove Concrete Approach In The Designated Area(s). Haul Off Material. Cut/remove Adjacent Curbs If Needed. Grade And Compact Base As Needed For Stabilization. Drill And Install Anchors On 2 Feet Centers In Adjacent Concrete Using 1/2" Rebar. Install 1/2" Rebar Reinforcement on 2 Feet Centers. Form And Pour New 4000 PSI Reinforced Commercial Concrete Approach Per City Code. Install Concrete Expansion Joints With Proper Spacing.

Concrete Dumpster Pad - Replacement 08" 1,116.00 SF

Saw Cut, Jackhammer, & Remove Concrete In The Designated Area(s). Haul Off Material. Grade And Compact Base As Needed For Stabilization. Drill And Install Anchors On 2 Feet Centers In Adjacent Concrete Using 1/2" Rebar. Install 1/2" Rebar Reinforcement On 2 Feet Centers. Form And Pour New 4000 PSI Reinforced Concrete. Install Concrete Expansion Joints With Proper Spacing.

Mulvane High School (Phase I)

Asphalt Large Crack Repair (16" Wide) 03" 1,948.00 LF

Mill & Remove Asphalt From All Cracks That Are 1" Or Larger Or Have Base Failure. Milling Shall Be At Least 16" Wide, Wider As Necessary. Place & Compact New Hot Mix Asphalt Flush With Surrounding Pavement. Asphalt Mix To Be Used: BM-2 Surface Mix.

Asphalt Large Crack Repair (32" Wide) 03" 1,053.00 LF

Mill & Remove Asphalt From All Cracks That Are 1" Or Larger Or Have Base Failure. Milling Shall Be At Least 32" Wide, Wider As Necessary. Place & Compact New Hot Mix Asphalt Flush With Surrounding Pavement. Asphalt Mix To Be Used: BM-2 Surface Mix.

Asphalt Patching 03" 4,148.00 SF

Remove Damaged Area(s) Of Asphalt Down To Proper Depth. Haul Off Material.

Place And Compact New Hot-mix Asphalt In The Area(s) Removed. Asphalt Mix To Be Used: BM-2 Surface Mix.

Asphalt Milling And Paving 02" 63,302.00 SF

Mill The Entire Asphalt Surface Down To 2" Depth. Haul Off Material And Thoroughly Clean The Milled Surface.

Apply SS1H Tack Oil Over The Entire Asphalt Surface. Pave And Compact A Hotmix Asphalt Overlay Over The Entire Milled Asphalt Surface. Asphalt Mix To Be Used: BM-2 Surface Mix. All Workmanship And Materials To Meet Or Exceed City Quality Specifications.

If Unstable Asphalt Is Found Under The Milled Surface, It May Be Necessary To Perform Full Depth 6" Repairs In Order To Properly Stabilize The Area(s). If This Becomes Necessary, The Rate Would Be \$___/SF. The Contractor Will Always Seek Approval Before Adding Any Additional Expenses.

If Unstable Base Material Is Found Under The Pavement, It May Be Necessary To Over-excavate Another 6" Of Material And Replace With New 6" Compacted Base Rock Or Crushed Concrete For Proper Stabilization. If This Becomes Necessary, The Rate Would Be \$___/SF. The contractor Will Always Seek Approval Before Adding Any Additional Expenses.

Crack Sealing 20,000.00 LF

Blow Out & Seal All Cracks 1/4" Or Larger (excluding "gated" Areas) Using Dura-Fill PL Premium Hotmelt Rubberized Crack Sealer.

Sealcoating 2 Coats Spray 286,549.00 SF

Thoroughly Clean The Parking Lot To Be Sealed. Apply Action Pave LP Premium Commercial Sealcoat Over The Entire Asphalt Surface Using A Two-Coat Spray Process. Sealer Shall Include 3 Lbs Of Fine Quarts Sand Per Gallon Of Sealer, 3% Latex Additive, And A 75/25 Concentrated Blend. The Asphalt Sealer And Application Rates Shall Meet Or Exceed The Standards Of Federal Specification RP-355E.

Striping

1.00 LS

Layout & Stripe The Parking Lot As Original Using Ultra High-grade Sherwin Williams "Hotline" Latex Striping Paint.

Notes:

Interested bidders must visit the site and meet with USD 263 Director of Operations before submitting a bid. The purpose of the meeting is for bidders to familiarize themselves with the project and to verify the work in this project. Please call Brad Canfield at 316-777-1102 to schedule a meeting.

Pending Board of Education approval, the successful bidder will begin work on the project no sooner than June 9, and complete the project before August 7.

Obtaining any necessary permits will be the responsibility of the contractor.

All contractors are required to comply with all local, state, and federal laws, ordinances, and regulations, in all bids.

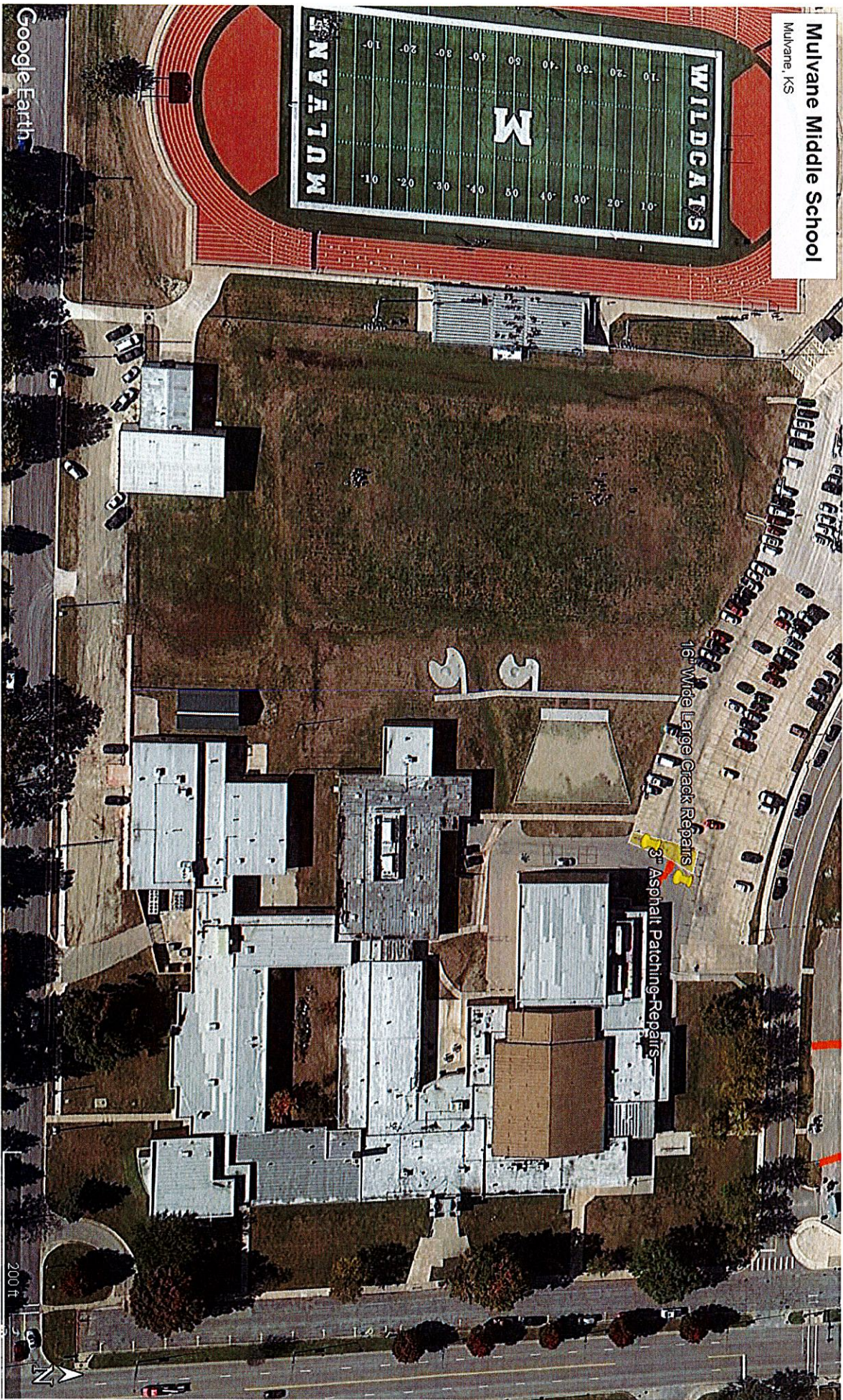
The Board of Education reserves the right to reject any and all bids if deemed necessary.

The Board of Education reserves the right to cancel phases of the project if additional costs are incurred due to necessary over-excavating or unforeseen circumstances.

The successful bidder will coordinate with USD 263 Director of Operations or their designee.

Please submit all bids to Brad Canfield by Tuesday, June 2, at 2:30PM.

Please call Brad Canfield (316)777-1102 with any questions or to schedule a walkthrough.



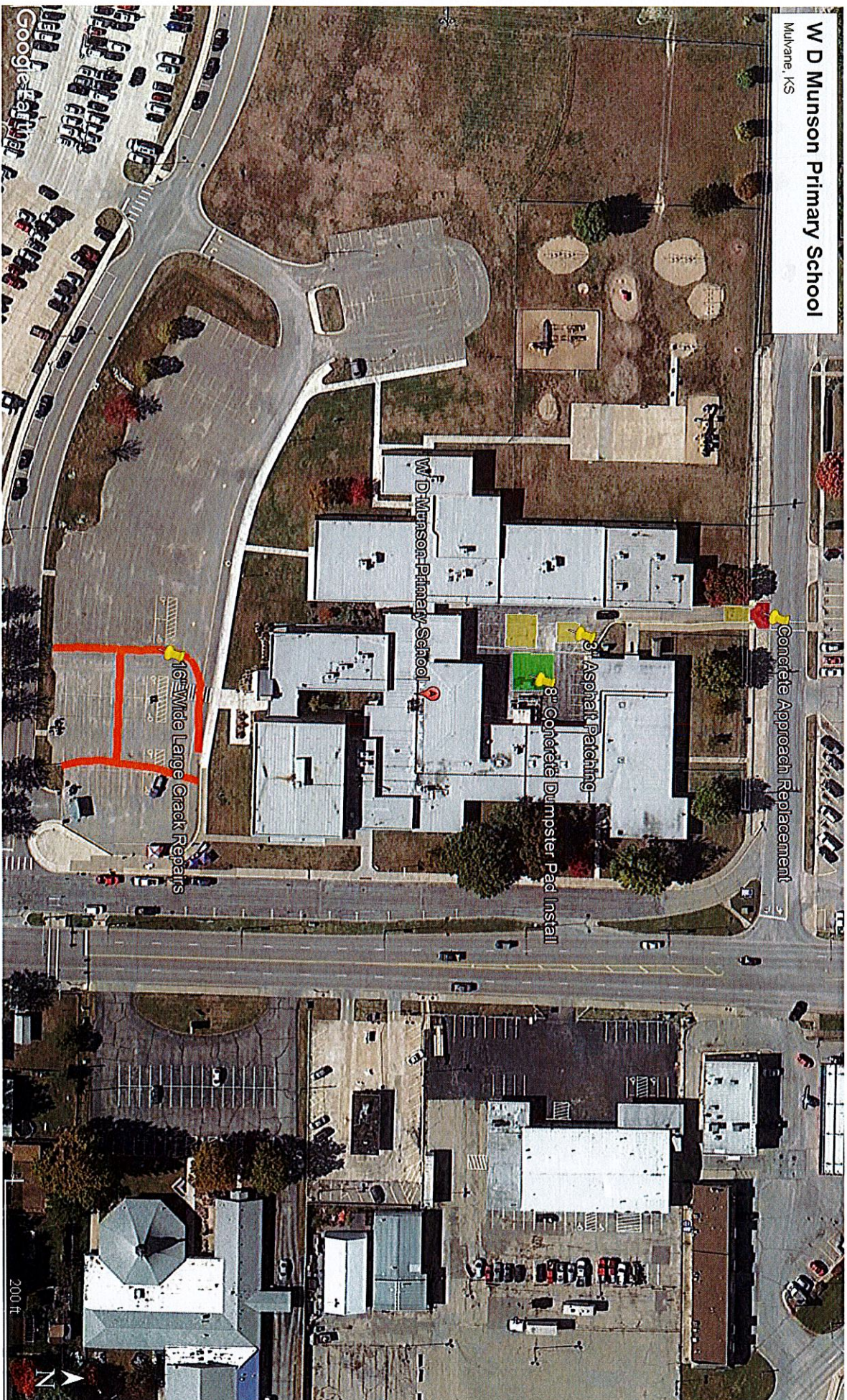
Mulvane Middle School
Mulvane, KS

WILDCATS
M
10 20 30 40 50 40 30 20 10
10 20 30 40 50 40 30 20 10
MULVANE

Google Earth

200 ft





Mulvane High School

Mulvane, KS

